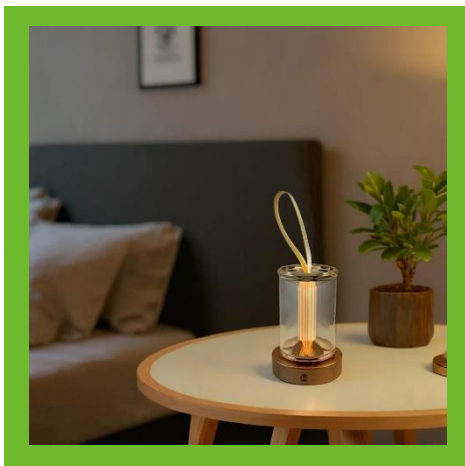


INTRODUCTION

Golden Halo Series

WEPL030GD001\ WEPL030GD002



CATALOG

01 Product Introduction

02 Function Introduction

03 Product Specification

04 Warranty Terms

05 Return Process

Product Introduction

The design of this lamp features simplicity and elegance as its main characteristics, combining modern and classic elements, and highlighting the following key design concepts.

Simplicity modeling

The lamp has no unnecessary decorations, giving a minimalist appearance, this design is not only suitable for modern interior design styles but also easily integrates into various styles of spaces.

Golden Element

The golden details on the top and base bestow it with a noble and elegant charm. Gold symbolizes warmth, luxury, and brilliance, making it an ideal highlight element in a space.

Transparent Lampshade

The design of the transparent glass lampshade allows light to diffuse evenly, creating a warm and soft ambience, which is especially suitable for creating a cozy home atmosphere.

Nylon Rope

The hanging ring design at the top is both a decorative and functional element. This detail allows the lamp to be placed on a tabletop or hung on the wall, increasing its versatility.

Soft Light

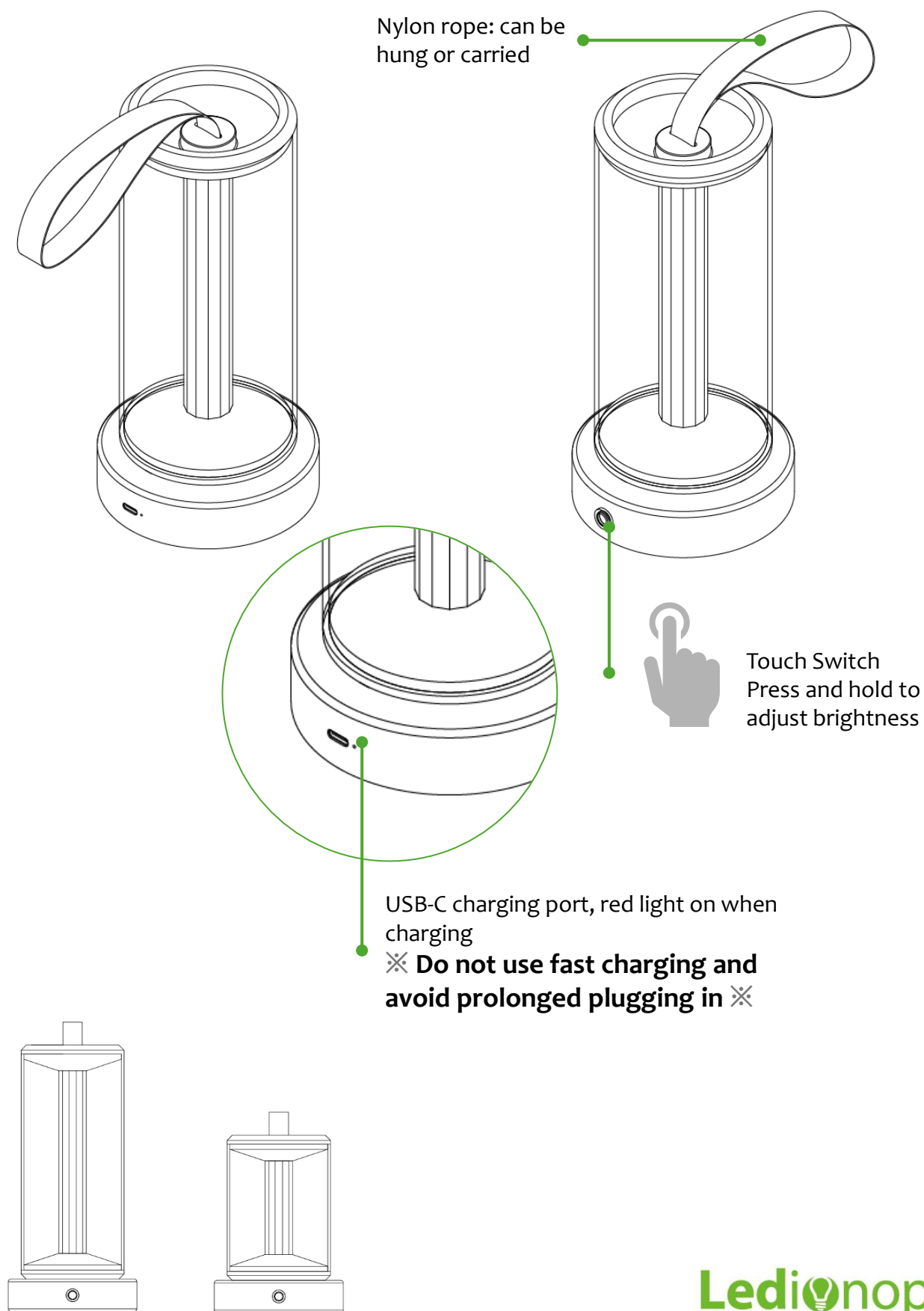
The light source of this lamp emits a soft, non-glaring light, making it ideal for ambient lighting in home settings such as bedrooms, living rooms, or dining tables.

Delicate Craft

The metal craftsmanship of the base is meticulously processed, and the surface texture exudes a sense of high quality, making the overall design appear more upscale. The main design focus of this lamp is to combine practicality with aesthetics, providing a product that functions to illuminate and enhance the ambience of the space. Whether used as a decorative piece or functional lighting, it can easily meet the needs of different settings.



Function Introduction



Product Specification

Golden Halo-WEPL030GD001

Wattage	3W
Color Temperature	3000K±200
Luminous Flux	112lm
Switch	Touch Switch Press and hold to adjust brightness
Ra	81
Input Type C	5V 2A
Output USB-A	False
Battery	Lithium 3.7V,4000mAh
Charging Time	3-4 hour
Usage Time	Maximum brightness: 5 hour Minimum brightness: 6 hour
IP Rating	False
Bluetooth	False
Size(mm)	Ø100x140
Color	Golden
Weight(g)	391
Warranty	3 months

Product Specification

Golden Halo-WEPL030GD002

Wattage	5W
Color Temperature	3000K±200
Luminous Flux	195lm
Switch	Touch Switch Press and hold to adjust brightness
Ra	81
Input Type C	5V 2A
Output USB-A	False
Battery	Lithium 3.7V,4000mAh
Charging Time	3-4 hour
Usage Time	Maximum brightness: 5 hour Minimum brightness: 6 hour
IP Rating	False
Bluetooth	False
Size(mm)	Ø100x210
Color	Golden
Weight(g)	493
Warranty	3 months

Warranty Terms

Warranty Policy

1. The company guarantees a product warranty of purchase within 3 months and a seven-day appreciation period for online shopping. The warranty coverage is valid only under correct and normal usage. Damage caused by the following conditions is not covered under the free warranty:

- (a) Any accidental, misuse or intentional damages causing malfunction
- (b) Misuse by not following the instructions properly.
- (c) Unauthorized repairing or modification done to the product.
- (d) Damage caused by acts of nature or natural disasters and other natural disasters

2. During the warranty period, please keep all complete accessories included with the product shipment

3. If you wish to return the product within the seven-day appreciation period for online shopping, please use the Shopee process for returns/exchanges. When returning the product, please ensure that the original packaging is intact, meaning it must be restored to the original state in which the customer received it (including the outer packaging box, main product, inner and outer packaging, etc.). Our company fully guarantees the customer's shopping rights.

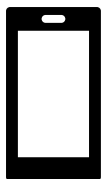
4. After applying for a return, please proactively request a return receipt from the delivery personnel and be sure to keep it until the return is completed, to facilitate future inquiries.

****If the product is damaged during return/exchange shipping, the customer will be responsible. Please ensure the package is properly wrapped.****

Return and Exchange Process (seven-day appreciation period)

During the appreciation period, please use the Shopee app for returns/exchanges.

Since Shopee does not provide an exchange system, if you need to exchange a product, you can apply for a return and refund for the item you wish to exchange, then repurchase the desired item, or contact us directly via **Chat**, we will assist you with the exchange.



For product returns/exchanges, please ensure the original product's integrity and properly package it for return shipping



Exchange

Once the product acceptance, the replacement new product will be sent out

Refund

Once the product is accepted, the refund process will begin



New Product
Sent Out



Shopee
Refund



Thank you for your
patience and support

Warranty Period (After seven-day appreciation period) Exchange



If the product has any problem during the warranty period, please choose a convenient method to contact us.

Our customer service will contact you to understand the product status, confirm that the product meets the warranty regulations, and then provide you with the shipping method and exchange information.



Please keep the original product intact and properly packaged.
(Shipping costs are borne by the buyer)



Confirmation of product status



New product delivery
(Shipping cost paid by us)



Thank you for your
patience and support