

HeadLamp LDS-5

Type: H16

DCHZX30H1610



Headlamp LDS-5 series delivers unique brilliant light with outstanding efficiency and elegant design. It's able to meet requirements of output and stability due to it is developed and tested to withstand extreme environment conditions and wide range of temperature change. It also provides distinct optical performance and uniform light pattern. With LDS-5 series Headlamp, you will start to experience and enjoy the excellent adventure during driving time.

Features

- Aerodynamical Heat Cooling System with Nano Cooling Coating
- Small Size, Applicable for most vehicles

Applications

- Exterior Automotive Lighting
- High Beam/ Low Beam for Headlight

Ordering Information

DC
X1-X2

HZ
X3-X4

X30
X5-X7

H16
X8-X10

1
X11

0
X12

X1-X2		X3-X4		X5-X7		X8-X10	
Code	Type	Code	Type	Code	Type	Code	Type
DC	Interior code	HZ	Model	X30	Series	H16	Size

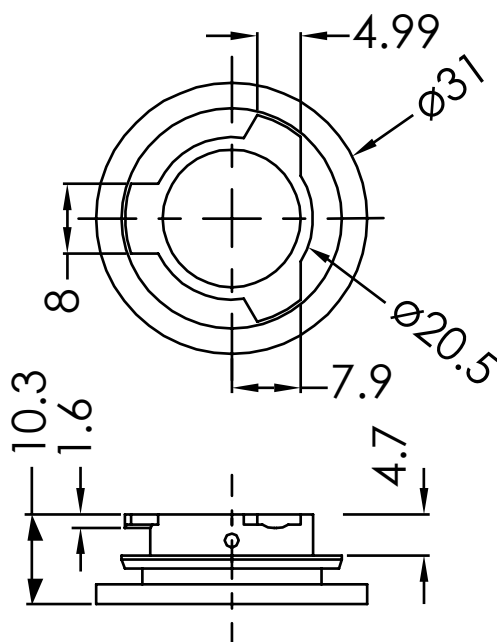
X11 Component		X12 Packing	
Code	Type	Code	Type
1	Edison	0	Packing

Characteristics

Spec.	Description / Value
Cooling System	Fanless, Nano Cooling Coating
LED Chip	6 PCS
Power	18W
Voltage	12-24V
Housing Material	Aluminum
LED Lifespan	10,000 Hours
Flux Output	1,650 lm

Mechanical Dimensions

Notes:
1. Unit: mm.
2. Tolerance: $\pm 0.1\text{mm}$



Product Content

- 1.Manual*1PCS
- 2.Headlamp*2PCS
- 3.Controller*2PCS(12-24V)
- 4.Double-sided tape*2PCS
- 5.Lacing*4PCS

1



2



3



4



5



Product Packaging information

Carton Exterior Appearance

Dimensions: 185 mm X 95mm X 85mm



HS and China RoHS compliants product

符合歐盟 RoHS 指令的要求；

中國的相關法規和標準，不含有毒有害物質或元素。

