

HeadLamp LDS-3

Type: H8

DCNSPC1H0800



Headlamp LDS-3 series delivers unique brilliant light with outstanding efficiency and elegant design. It's able to meet requirements of output and stability due to it is developed and tested to withstand extreme environment conditions and wide range of temperature change. It also provides distinct optical performance and uniform light pattern. With LDS-3 series Foglamp, you will start to experience and enjoy the excellent adventure during driving time.

Features

- Small size, applicable for most vehicles
- Golden yellow colored
- Color : According to ECE boundary definition

Applications

- Exterior Automotive Lighting
- Fog Lamp for Headlight

Ordering Information

DC
X1-X2

NS
X3-X4

PC1
X5-X7

H08
X8-X10

0
X11

0
X12

X1-X2		X3-X4		X5-X7		X8-X10	
Code	Type	Code	Type	Code	Type	Code	Type
DC	Interior code	NS	Model	PC1	Series	H08	Size

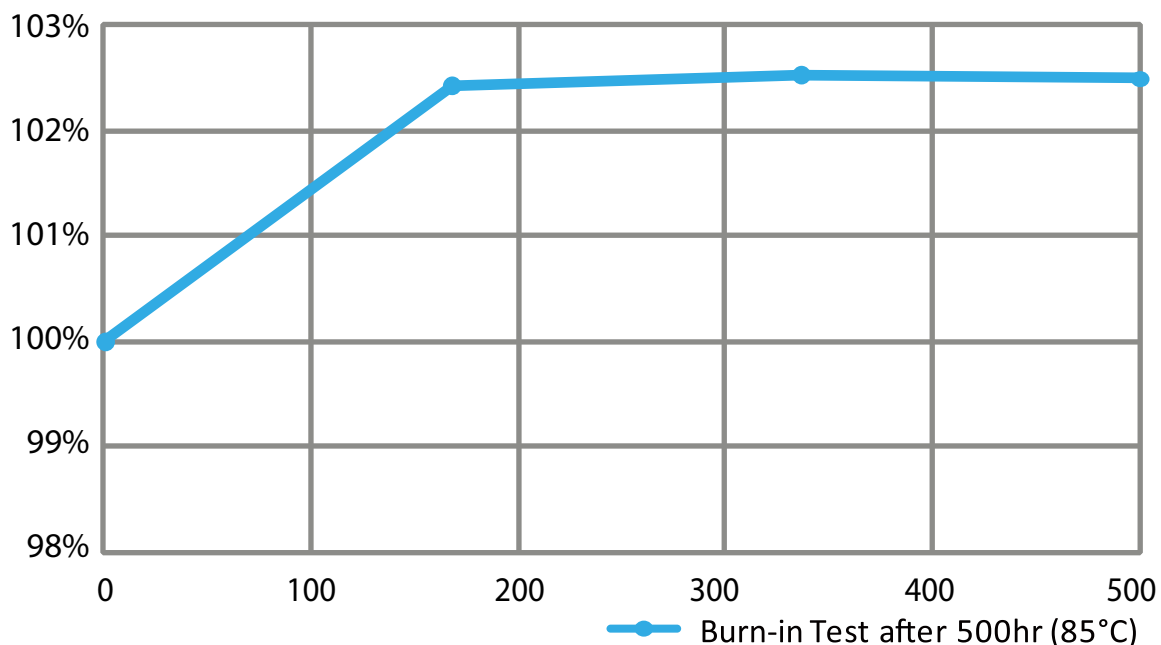
X11 Component		X12 Packing	
Code	Type	Code	Type
0	Component	0	Packing

Characteristics

Spec.	Description / Value
LED Chip	Customized golden 2016 LED per bulb - 4 PCS
Power	15W
Voltage	12-24V
Housing Material	6063 Aluminum
LED Lifespan	30,000 Hours
Flux Output	1,800 lm

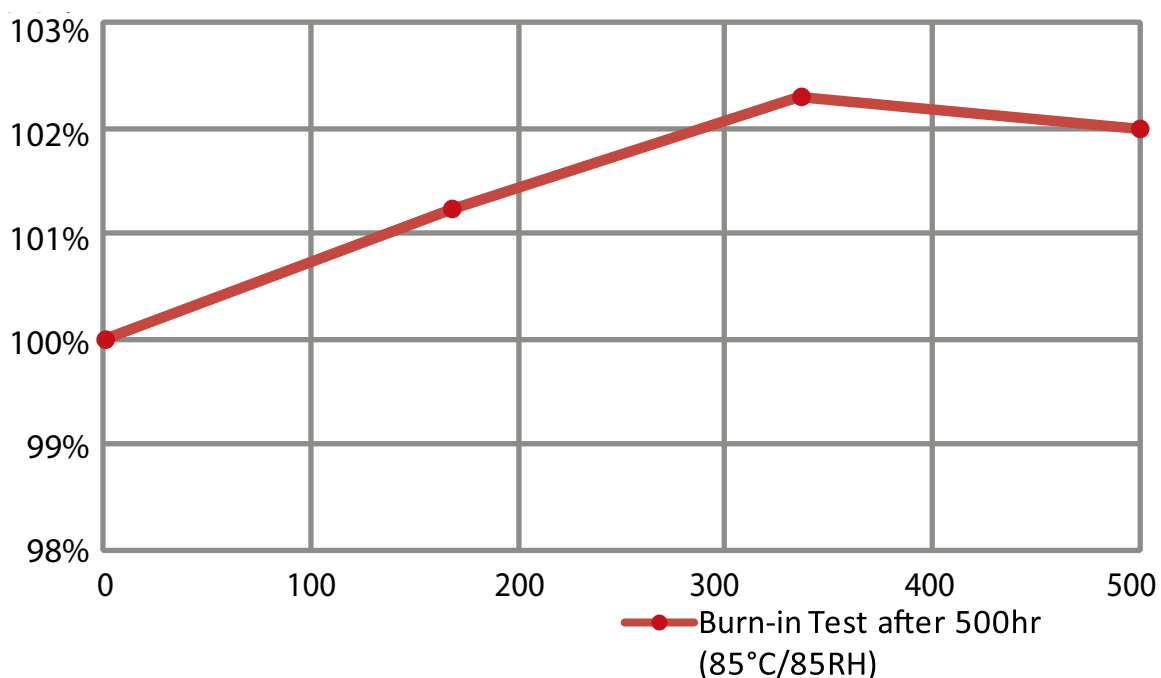
Lumen difference after 85°C Burn-in Reliability Test for 500 hours

The blue curve below shows the lumen decay% after burn-in test for 168hr, 336hr and 500hr, respectively, which is no decay during this tough environmental test. It reveals the dissipation ability and reliability performance of LDS-3 series headlamp with its professional and elegant design.

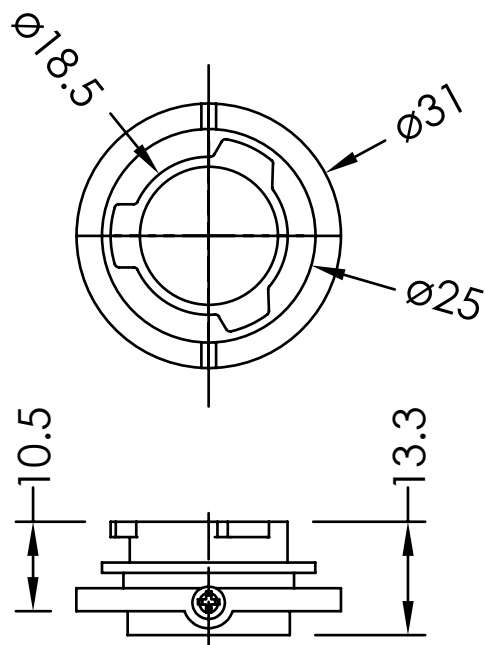


Lumen difference after 85°C/85RH Burn-in Reliability Test for 500 hours

The blue curve below shows the lumen decay% after burn-in test for 168hr, 336hr and 500hr, respectively, which is no decay during this tough environmental test. It reveals the dissipation ability and reliability performance of LDS-3 series headlamp with its professional and elegant design.



Mechanical Dimensions



Notes:
1. Unit: mm.
2. Tolerance: $\pm 0.1\text{mm}$

Product Content

- 1.Manual*1PCS
- 2.Foglamp*2PCS
- 3.Controller*2PCS(12-24V)
- 4.Double-sided tape*2PCS
- 5.Lacing*4PCS

1



2



3



4



5



Product Packaging information

Carton Exterior Appearance

Dimensions: 185 mm X 95mm X 85mm



HS and China RoHS compliants product

符合歐盟 RoHS 指令的要求；

中國的相關法規和標準，不含有毒有害物質或元素。

